

## Specifications Sheet:

# PRIME FOCUS MESH DISH KIT 3 Meter DISH supplied as 6-Petal

**Available F/D: 0.45** (P/N: FPD 3M0 KIT/6P/DIY)



3 meter DISH KIT



- ✓ This 3 Meter Prime Focus MESH DISH KIT is specially designed to use with prime focus dish feeds.
- ✓ RF HAMDESIGN can offer you a wide range of Dish feeds, Linear (H or V) or circular (LHCP or RHCP) polarized. Multiband linear dish feeds up to 5 band are also available.
- ✓ We can supply you several dish feeds clamps to fit a dish feed.
- ✓ Built up notes of each Mesh Dish are in the delivered user manual described step by step with lot of pictures.
- ✓ All delivered mounting parts are made of stainless steel and or Aluminum.
- ✓ To assemble RF HAMDESIGN's 6-Petal DISH KIT you only need some small hand tools, open end spanner No. 10 and 13, hand driller, fine liner, etc.
- ✓ Assembly time is about 6... 8 hours.
- ✓ **This 3M0 6-Petal Dish is NOT available as Readymade 3M0 6-Petal Dish incl mounted Mesh only as Do It Yourself KIT.**



### Specifications 3 Meter Prime Focus Mesh Dish 6-Petal

Mesh useable up to	6 GHz / Option 11GHz 2.8mm mesh
Weight 3M dish (ex dish feed)	30 Kg / 36.5 Kg (6mm / 2.8mm mesh)
Wind load 120 Km/h	771 N / 1046 N (6mm / 2.8mm mesh)
DISH Surface area:	7.07 M2
Supplied including Mast clamp	No: Available Option
2 pcs CNC Milled Hub	Aluminum, 20cm diameter / 10mm thickness
Dish Material / Wire Mesh Material	Aluminum, not painted / Wire mesh galvanized
Supplied bolts / nuts / washers	Stainless steel
16 pcs 20mm assembled ribs ready to place	Aluminum
Inner rings to secure mesh	5mm rod / Aluminum
Feed support including	<b>3</b> or <b>4</b> leg 15 or 20mm/sq / Aluminum
Available F/D	0.45
Weight	33Kg / 37Kg (6mm / 2.8mm mesh)

### Gain calculation

(Surface quality factor (eta) 0.65)

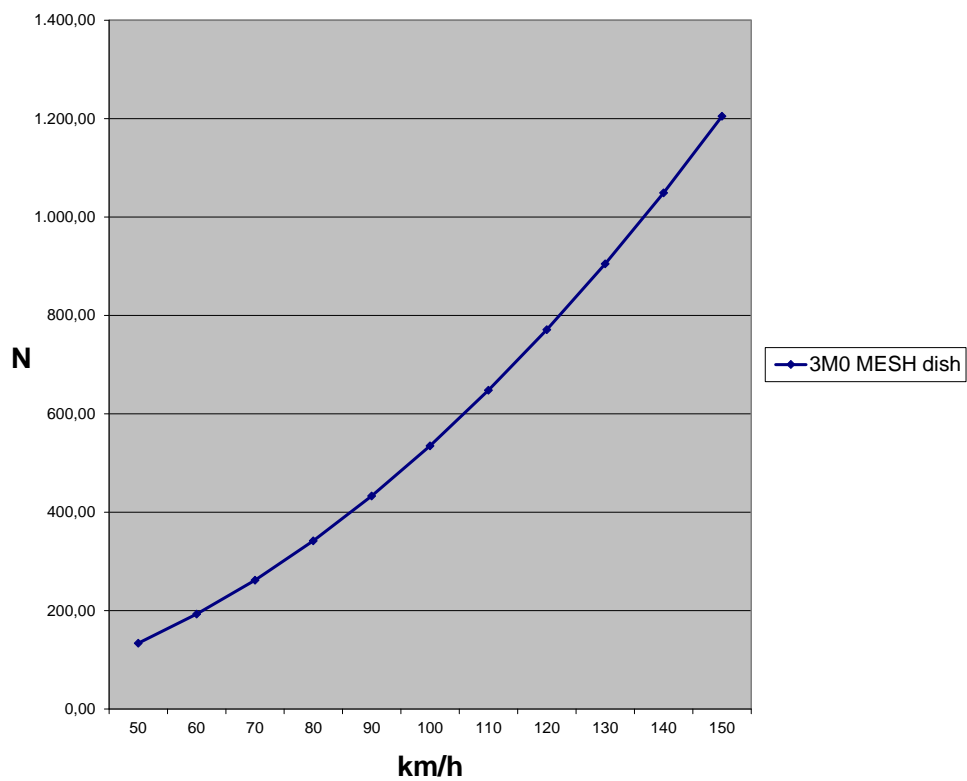
Frequency MHz	Gain dBi	1/2-power (3 dB) beam widths Degree
1296	30.3	5.7
2320	35.4	3.2
3456	38.8	2.1
5760 (option 2.8mm mesh)	43.3	1.3
10368 (2.8mm mesh)	N.A.	N.A.

### Focal length

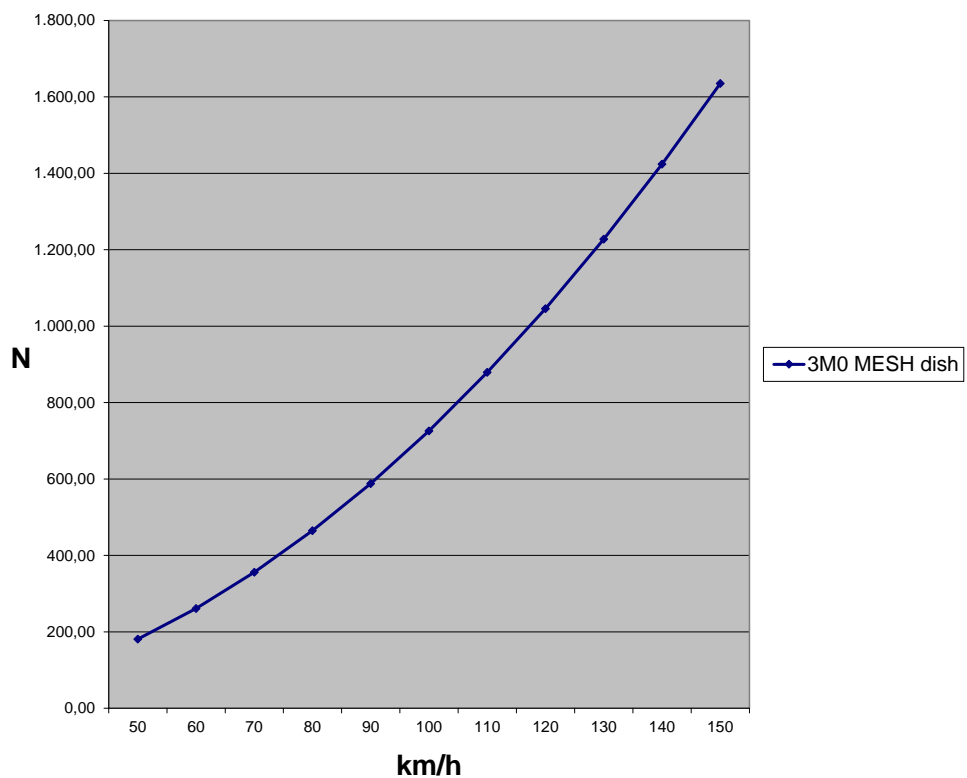
(Focal length: the distance from the center of the dish to the front of the dish feed.)

DISH SIZE	F/D=0.45
3 meter	135 cm




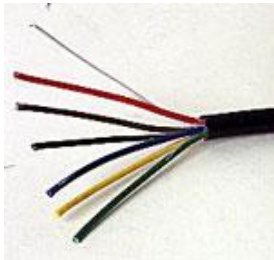

**RF HAMDESIGN  
WIND LOAD 3M0 MESH DISH 6mm Mesh**



**RF HAMDESIGN  
WIND LOAD 3M0 MESH DISH 2.8mm Mesh**

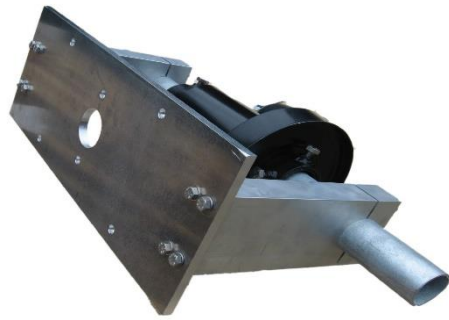


## Available options to rotate the 3M0 Meter 6-Petal Mesh DISH

<ul style="list-style-type: none"> <li>• <b>SPID Azimuth / Elevation</b> <b>Model: BIGRAS/HR rotator</b></li> <li>• <b>Incl controller</b> and built in track interface, type MD-01 (19" rack mount model) or MD-02 (Desk top model)</li> <li>• Resolution standard 0.1 degree / step</li> </ul>	
<ul style="list-style-type: none"> <li>• <b>PS-01 Power supply 110~230Volts</b></li> <li>• AC Dual Voltage output used for MD-01 / 02 controller</li> <li>• 19# Rack mount model</li> <li>• Or Desktop model: PS-02</li> <li>•</li> </ul>	
<ul style="list-style-type: none"> <li>• <b>4-Core control cable (Motor Drive)</b></li> <li>• 25 Meter length</li> <li>• Option: Longer run screened sensor control cable</li> </ul>	
<ul style="list-style-type: none"> <li>• <b>6-Core control cable (Sensor)</b></li> <li>• 25 Meter length</li> <li>• Option: Longer run screened sensor control cable</li> </ul>	
<ul style="list-style-type: none"> <li>• <b>Mounting bracket to interface dish and Rotator</b></li> <li>• Model: UA-02</li> <li>• Supplied incl counter weight arms (Counter weight not included)</li> <li>• Centre pipe not included !</li> </ul>	

- **Mounting bracket to interface dish and Rotator**
- **Model: BR-03**
- Made of aluminium
- Stainless steel bolts
- Easy to mount to all SPID AZ&EL rotators
- Supplied including 70cm Centre Pipe

BR-03 = More simple version of UA-02, counter weight arms are not included, should be placed by user yourself



Note: Prices can be found in our price list, download link at our website: [www.rfhamdesign.com](http://www.rfhamdesign.com)