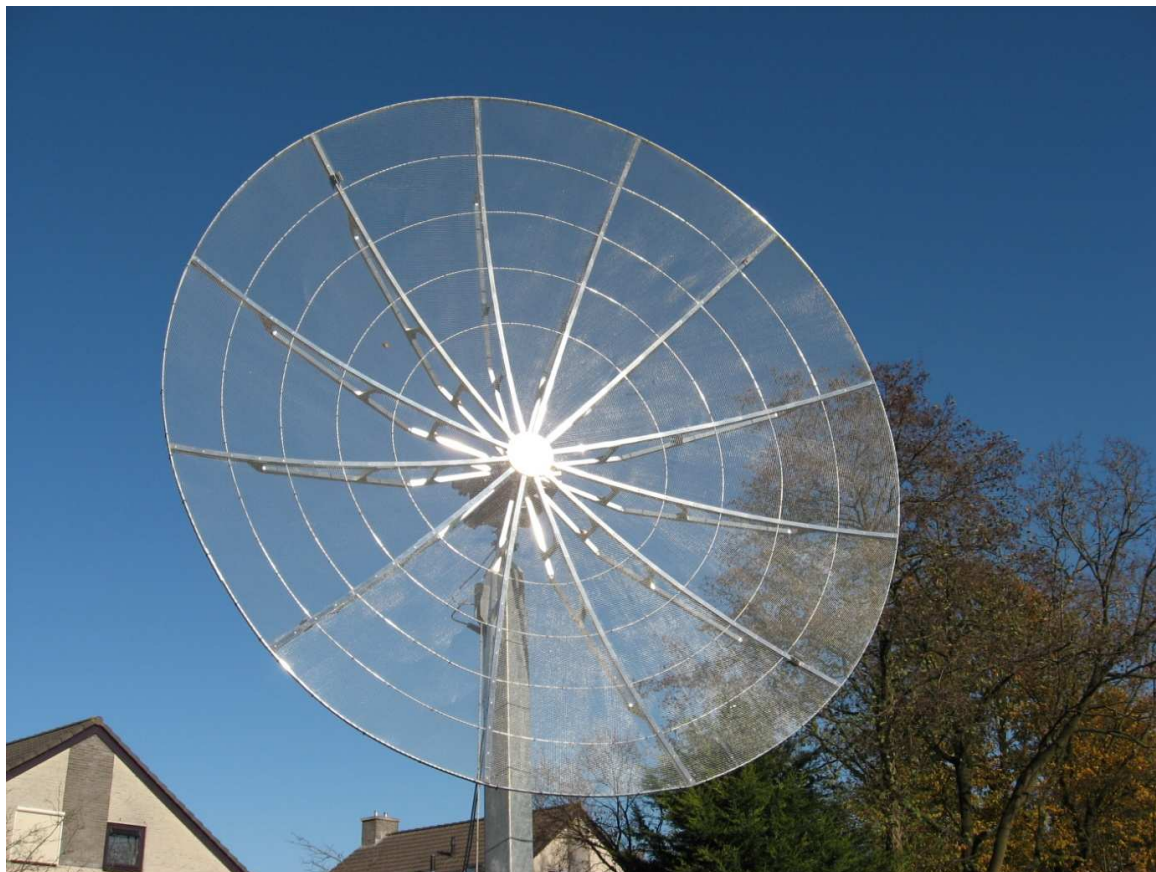
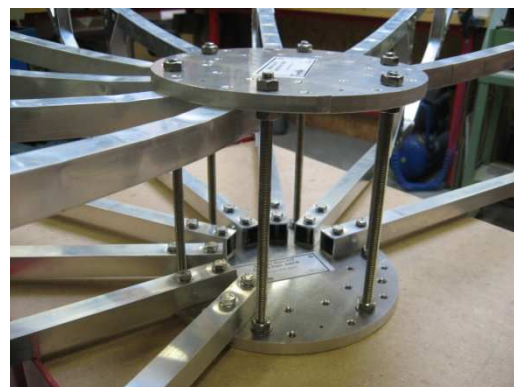


**Specifications Sheet:**  
**PRIME FOCUS MESH DISH KIT**  
**3 Meter DISH**  
**F/D = 0.40**  
(F/D=0.45 available start 2012)



3 meter DISH KIT



- ✓ This 3 Meter Prime Focus MESH DISH KIT is specially designed to use with prime focus dish feeds.
- ✓ RF HAMDESIGN can offer you a wide range of Dish feeds, Linear (H or V) or circular (LHCP or RHCP) polarized. Multiband linear dish feeds up to 5 band are also available.
- ✓ Built up notes of each Mesh Dish are in the delivered user manual described step by step with lot of pictures.
- ✓ All delivered mounting parts are made of stainless steel and or aluminum.
- ✓ To assemble RF HAMDESIGN's DISH KIT you will only need some small hand tools, a little hand driller, a metal saw, some writing stuff, a small metal hand cutter, a open end spanner No. 10 and 13 and a Hand riveter
- ✓ Assembly time is about 7...8 hours.



### Specifications 3 Meter Prime Focus Mesh Dish

Mesh useable up to	6 GHz
Weight 3M dish (ex dish feed)	27 Kg
Wind load 120 Km/h	773 Newton
DISH Surface area:	7.07 M2
Mast clamp	Yes: Available Option
2 pcs CNC Milled center	Aluminum, 20cm diameter / 10mm thickness
20mm assembled ribs ready to place	12 pcs
Inner rings to secure mesh	5 pcs
Easy to place outer RIM	1 pcs
Feed support including	3 or 4 – leg 15 or 20mm/sq
Available F/D	0.4 (available start 2012 0.45)

### Gain calculation

(Surface quality factor ( $\eta$ ) 0.65)

Frequency MHz	Gain dBd	1/2-power (3 dB) beam widths dB
1296	30.3	5.7
2320	35.4	3.2
3456	38.8	2.1
5760	43.3	1.3

### Focal length

(Focal length: the distance from the center of the dish to the front of the dish feed.)

DISH SIZE	F/D=0.40	F/D=0.45
3 meter	120 cm	135 cm

### Available options:

<ul style="list-style-type: none"><li>➤ SPID Azimuth / Elevation rotator, 12 / 24 Volts</li><li>➤ Incl controller with built in track interface</li><li>➤ Resolution standard 1 degree / option 0.5 and 0.2 degree</li></ul>	
<ul style="list-style-type: none"><li>➤ Mounting bracket Dish &lt;&gt; Rotator</li><li>➤ Made of aluminium</li><li>➤ Stainless steel bolts</li><li>➤ Easy to mount at all SPID AZ&amp;EL rotators</li></ul>	
<ul style="list-style-type: none"><li>➤ SPID Adaptor</li><li>➤ Used to place the rotator at a base plate</li></ul>	
<ul style="list-style-type: none"><li>➤ Power supply 110~230Volts AC</li><li>➤ Output 20-26Volts DC / 11.7Amp</li></ul>	
<ul style="list-style-type: none"><li>➤ 8-Core control cable</li></ul>	

Note: Prices can be found in our price list, download link at our web-site:  
[www.rfhamdesign.com](http://www.rfhamdesign.com)

# RF HAMDESIGN WIND LOAD - 3 Meter MESH DISH

